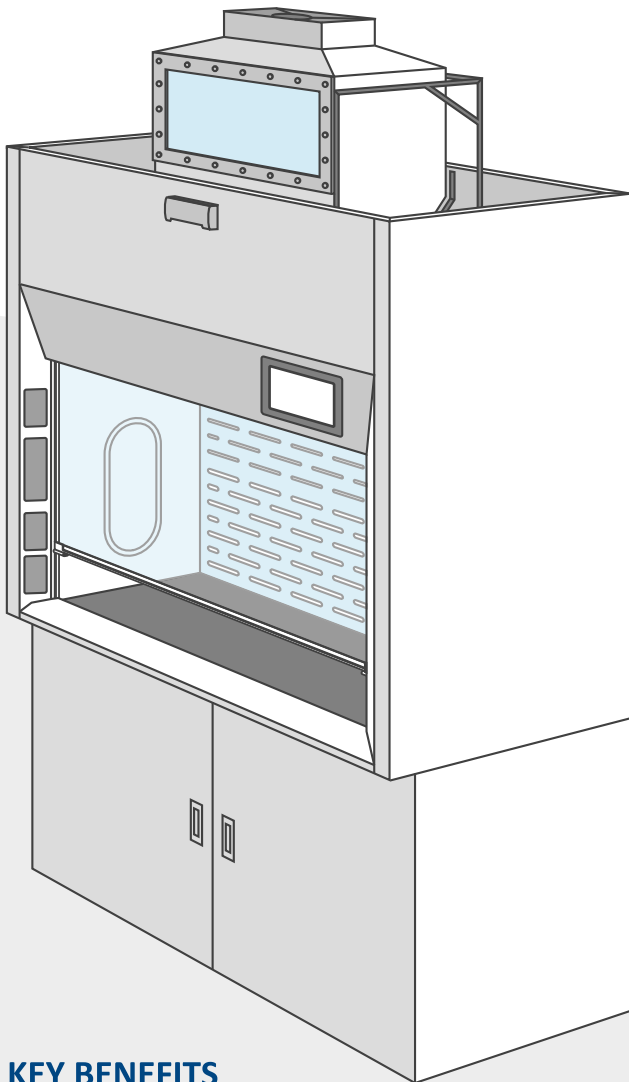




JAD SMART Fume Hood Scrubber



Fume hood provides user protection from chemical exposure by containing chemical fume within the fume hood and exhausts these hazardous fumes directly out into the environment. JAD offers fume hood accessories such as fume scrubbers that can help to scrub and clean the exhaust air to reduce the environmental pollution.

JAD SMART Fume Hood Scrubber provides excellent air pollution control for water soluble chemical fumes that may be present in the extracted exhaust air that are released into the environment.

KEY BENEFITS

Excellent scrubbing efficiency

Scrubber spraying of water is against the exhaust air flow to maximized liquid/air contact resulting in 95-98% efficiency for most water-soluble acid and base airstreams.

Durability

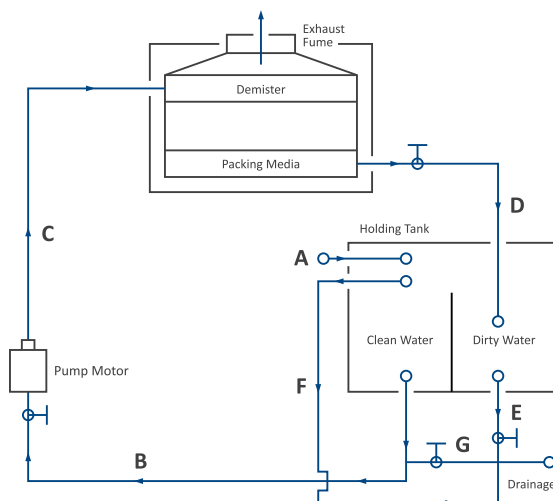
Main scrubbing body is constructed from Polypropylene, an excellent material to withstand chemical and corrosion.

Compact

The scrubber system is design compactly to house into a standard bench top fume hood with the scrubber system (packing media, spray manifold and de-mister) placed on top of the fume hood, while the pump and holding tank is located inside the base cabinet.

SCRUBBING PROCESS

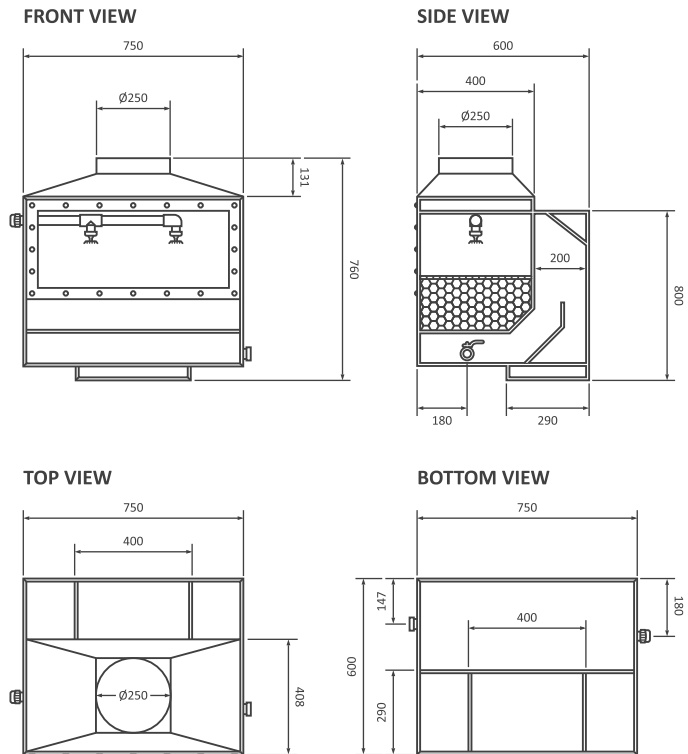
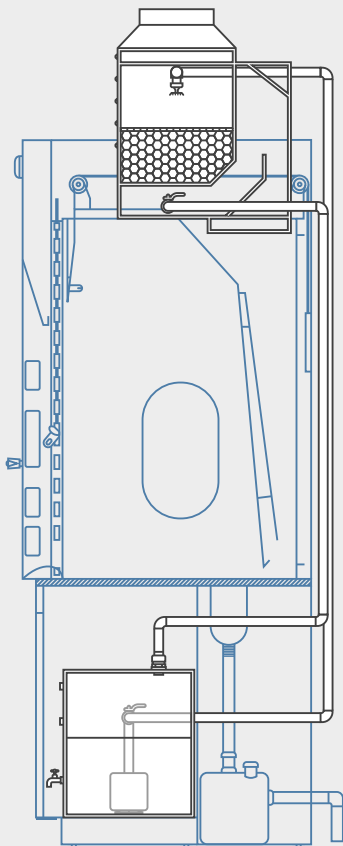
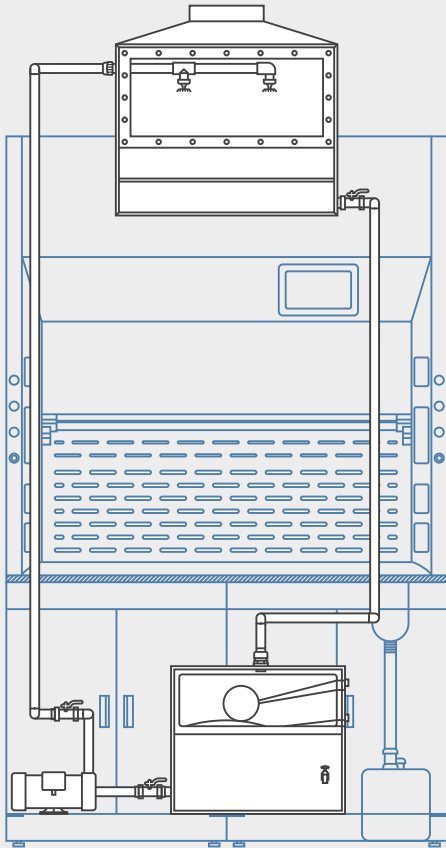
- The exhaust fumes from the fume hood enters the scrubber and first pass through the packing media (bottom filter) follow by the liquid spray section for the scrubbing process.
- These exhaust fumes then go through the de-mister (top filter) to remove any carry over water vapour (mist), before it is released into the building exhaust duct to the environment.
- The scrubbing liquid is collected in the holding tank at the bottom inside the base cabinet and is recirculated through the pump to the scrubber unit at the top of the fume hood in a closed loop.



Scrubber System Diagram

- A. Makeup water inlet from building water supply when holding tank water level is low.
- B. Holding tank water supply to pump motor.
- C. Water supply to scrubber unit.
- D. Scrubbed water returning from scrubber unit to holding tank.
- E. Dirty water drainage.
- F. Overflow pipe of holding tank to drainage.
- G. Clean water drainage.

Neutralizing Tank Fume Scrubber Diagram



TECHNICAL SPECIFICATIONS OF SCRUBBER

Size	Scrubber use for 1200mm, 1500mm and 1800mm width Fume Cupboard
Type of Scrubber	Fume Hood Mounted
Scrubber System Material	Polyvinyl Chloride (PVC) or Polypropylene (PP)
Accessories	PP Packing Media Mist Eliminators Viewing Window Chemical Resistant Pump Overflow Drain Pipe Holding Tank
Scrubbing Medium	Water



JAD SOLUTIONS PTE LTD
(A member of Natural Cool Holdings Limited)

87 Defu Lane 10 #05-02 Singapore 539219 ▪ Tel 65-6841 8656 ▪ Fax 65-6284 4415

Email enquiry@jad-venture.com ▪ Web jad-venture.com

Company Reg No. 200703726E ▪ GST Reg No. 200703726E